

## INSTRUCTION MANUAL

### Upright Glass Door Merchandisers

This user manual was originally written in English.  
 Please read the instructions carefully before using.

Kappaleen teksti



Before installing your cooler, read these instructions carefully.

## SAFETY PRECAUTIONS

• The purpose of the safety precautions in this manual is to ensure safe and correct use of the unit to minimize risks that could cause serious damage and injury to you or other persons. The safety precautions are divided into WARNINGS and CAUTIONS. Cases where improper handling of the unit could lead to death or serious injury are listed under the "⚠WARNING" heading. However, the cases listed under the "⚠CAUTION" heading could also lead to serious results. To ensure the safety, adhere strictly to both types of safety precautions.

- ⚠ **WARNING** Improper handling of the unit could lead to death or serious injury.
- ⚠ **CAUTION** Improper handling of the unit could lead to serious results depending on the circumstances.

- Text set off by the exclamation mark contains information that should be strictly adhered to.
- After reading the instruction manual, store it in an easily accessible place where the user(s) of this product can easily find it.

### PRECAUTIONS FOR INSTALLATION

#### ⚠ WARNING

- ! Installation should be performed only by the dealer or a qualified expert. Attempting to install the unit yourself could result in water leakage, refrigerant leakage, electrical shock, or fire.

### PRECAUTIONS FOR INSTALLATION

#### ⚠ WARNING

<p>! <b>DON'T TAMPER</b></p> <p>Installation should be performed only by the dealer or a qualified expert. Attempting to install the unit yourself could result in water leakage, refrigerant leakage, electrical shock, or fire.</p>	<p>⚡ <b>ELECTRICAL SHOCK HAZARDS</b></p> <p>Never splash water directly onto the product or wash with water as short circuit and electrical leakage could result.</p>
<p>💣 <b>DANGER OF EXPLOSION</b></p> <p>Never put flammable or volatile substances into the unit as explosion and fire could result.</p>	<p>🚫 <b>PROHIBITED</b></p> <p>Do not damage, modify, excessively bend, strain, twist or bundle up the power cord. Also, placing heavy objects on the power cord or squeezing it in a tight place could damage it, possibly resulting in electrical shock or fire.</p>
<p>🚫 <b>PROHIBITED</b></p> <p>Use a dedicated wall outlet. Do not use extension cords or convenience receptacles as this could result in electrical shock, overheating and a fire.</p>	<p>🔥 <b>FLAMMABLE</b></p> <p>Never use flammable spray cans or leave flammable substances near the unit. Sparks from electrical switches could result in explosion and fire.</p>

## SAFETY PRECAUTIONS

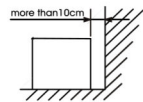
#### ⚠ WARNING

<p>! The cooler is intended for storage and display of beer and beverage for sale. Do not use for other purpose than the intended as this could adversely affect items placed in the unit.</p>	<p>⚠ <b>ROTATING DEVICE</b></p> <p>Never attempt to insert fingers, sticks, etc. fan is rotating at high speed inside the outlet. Injury, electrical shock and improper operation could result.</p>
<p>🚫 <b>PROHIBITED</b></p> <p>For indoor use only. Using the unit in a location exposed to rain could result in electrical leakage and electrical shock.</p>	<p>🚫 <b>PROHIBITED</b></p> <p>Never place heavy objects or items containing water on top of the unit. Objects could fall down and cause injury and spilled water could deteriorate the insulation of electrical components and result in electrical leakage.</p>
<p>! Install the unit in a location where the floor is sturdy enough to support the load of the unit. If the floor is not sturdy enough or installation is incorrectly performed, the unit could tip over and falling shelves and products could cause personal injury.</p>	<p>⚠ <b>CAUTION AGAINST EXPLOSION</b></p> <p>If you find gas leakage, please don't touch the cooler and close gas and open the door for ventilation. Gas leakage cause explosion, fire and fire injury.</p>
<p>! Store the unit in a location where it is not exposed to rain. Using a unit that has been exposed to rain could result in electrical leakage and electrical shock.</p>	<p>! Away from hot air sources. Cooling performance is reduced if the unit is placed near heat sources such as hot plates and stoves and if it is exposed to direct sunlight.</p>
<p>! Leave disassembly and disposal of the unit to qualified experts.</p>	<p>! Should the unit need temporary storage, make sure not to store the unit in a location where children play and take precautions so that the door cannot be completely closed. This will minimize the risk that a child becomes trapped inside the compartment.</p>

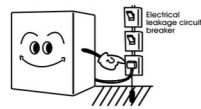
## ⚠ WARNING

### WELL VENTILATED PLACE

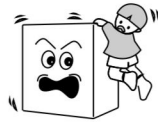
Please make more than 10cm space between cooler and wall. If there are no space, cooling capacity can drop down.



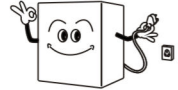
If installation in a damp location is unavoidable, also install an electrical leakage circuit breaker. If no electrical leakage circuit breaker is installed, electrical shock could result.



Never hang from the door or climb onto the unit. The unit could tip over or fall and cause material damage or injury.



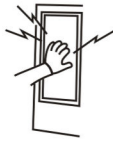
Disconnect the power cord plug from the wall outlet before moving the unit and make sure that the power cord is not damaged during transport. A damaged power cord could result in electrical shock and/or fire



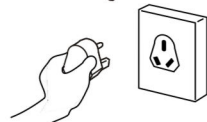
Grasp the handle when closing the door. Holding at other positions could result in pinched fingers and injury.



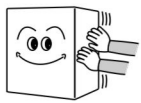
Do not push hand against or apply excessive force to glass surfaces as the glass could break and cause injury.



When disconnecting the power cord plug from the wall outlet, hold at the plug main body close to the outlet. Pulling the cord could cause wire breakage, possible resulting in overheating and fire.



Make sure that the unit does not tip over or fall when it is moved. A falling unit could cause serious injury.



Do not throw items onto the shelves and do not place items totaling more than 30kg on each shelf. The shelf could fall down, possibly cause injury.



Be sure attach and secure shelves correctly. An improperly attached shelf could fall down and cause injury.



3

# HOW TO USE

## BEFORE USE

- Remove shipping package, tape, etc and leave doors open ventilation for a while.
- The unit is cleaned before shipment. However, clean the compartment interior once after delivery
- Please insert power supply plug into the wall outlet, single-phase to cat voltage.
- Allow the unit to operate for about 1 hour to cool the compartment before placing items in the cooler

## WAIT 5 MINUTES OR MORE BEFORE RE-STARTING

- Restarting the unit immediately after it has been turned off may cause fuses to blow and activate the circuit-breaker, the compressor may be overloaded, and/or other damage may occur

## TEMPERATURE ADJUSTMENT

- For showcase cooler, the interior temperature during fully loaded at factory default setting will be kept at suitable temperature. If the ambient temperature is extremely high or the stuffing food inside is too much, that might cause the interior temperature a little bit higher. So it would be better to lower the setting temperature of the controller. On the opposite, if the ambient temperature is very low or empty loaded, or in less food storage, the interior temperature might be able to reach unsuitable temperature, and in return to cause the evaporator ice up. Thus, it would be better to higher the setting temperature of the controller.

## DRAIN TRAY

- Defrosting is performed automatically and drain water is collected in the drain tray.
- Water in the drain tray is evaporated automatically. In humidity, large amount of water in the drain tray, so please throw away drain water once a day.

## EFFICIENT USE

- Please follow the below instruction, you could save energy.
- To prevent cold air from escaping, open and close the door quickly and keep the door opened for as short a time as possible.
  - Please install the unit in the place which is well-ventilated.

## SHELF HEIGHT ADJUSTMENT

The shelf height can be adjusted  
Arrange the shelves in accordance with the dimensions of the items to be placed in the cooler.

## DISPOSAL OF WASTE FOAM

The waste flammable insulation foam should be sent to the place designated by specialized personnel.

4

## PLACING ITEMS IN THE SHOWCASE

This showcase employs a forced circulation of cold air system. If circulation of cold air is obstructed, the items will not be adequately refrigerated. Pay attention to the following points:

- Do not let items obstruct the cold air inlet and suction outlet.
- Place items so that they do not protrude from the shelves. The gap between the shelves and the door is used for circulation of cold air.
- Place items evenly on all shelves.
- Please do not display goods on the bottom. Please put goods on the shelf.

# CLEANING

## ⚠ WARNING

To prevent any electrical shock hazards or injury by rotating circulation fan, always disconnect the power cord plug from the wall outlet before cleaning.

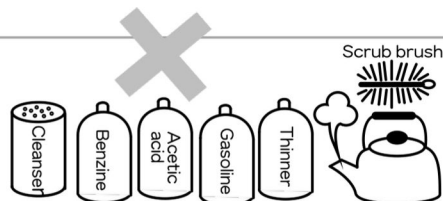
## EXTERIOR AND COOLER COMPARTMENT

- Wipe with a soft, dry cloth. If very soiled, wipe with a cloth that has been moistened with a detergent. Then wipe with a cloth that has been dipped in water.

## ⚠ WARNING

WARNING: Do not splash water directly onto the cooler and do not wash with water. Short-circuit and electrical shock could result.

- Clean the cooler regularly to keep it clean at times.
- Never use polishing powder, soap powder, benzene, Oil or hot water as these will damage the painting and Plastic components



## CHECKS

To ensure the safety, perform the following checks after cleaning.

- Is the power cord plug firmly inserted into a dedicated wall outlet? Confirm that the plug is not abnormally hot.
- Check the power cord for cracks and damage. Should the slightest irregularity be observed, contact the dealer from whom you purchased this unit or our customer's service.

This marking indicates that this product should not be disposed with other household wastes throughout the EU. To prevent possible harm to the environment or human health from uncontrolled waste disposal, recycle it responsibly to promote the sustainable reuse of material resources. To return your used device, please use the return and collection systems or contact the retailer where the product was purchased. They can take this product for environmental safe recycling.

5

In case the unit shows operating problems, check the following prior to calling the authorized service company:

SYMPTOMS	POSSIBLE CAUSE	SOLUTION
The unit is not operating	Faulty electrical contact	Verify electrical connections
	Poor electrical power	Check the power connection and electrical outlet
	Thermostat setting "0"	Change the thermostat setting to a higher number
Not reaching desired temperature	Unit is exposed to direct sun light	Relocate the unit to a shaded area
	Thermostat is not properly adjusted	Adjust the thermostat setting to a higher number
	Clogger condenser	Review Maintenance instructions listed in the manual
	Blocked grills	Clean the grills of any debris collected
	Door not properly closed	Check the leveling of the unit and door seal
	Products poorly distributed or excess product load	Redistribute the product load according Start instructions
Abnormal noises(This appliance emission should pressure level is below 50 dB)	The unit is not properly level	Level the unit following the Installation instructions
	Friction with other objects	Move the unit and avoid contact with other objects
Water on the floor	Drain hose is outside of the drain pan	Locate the hose in the drain pan

## WARRANTY & SERVICE

- Warranty is valid for one year from the date of purchase. The warranty covers defective parts and workmanship. The following items are not covered under warranty:
  1. Loss of products.
  2. Damages caused by transportation.
  3. Damages caused by modifications made by unauthorized individuals.
  4. Fluorescent lights, glass parts or plastic component parts.
  5. Worn out plugs or defective electrical components.
  6. Maintenance of the unit.
- Warranty is valid showing the purchase receipt. We offer a professional service network which offers the necessary technical support for your unit.

-WARNING: Keep ventilation openings, in the appliance enclosure or in the built-in structure, clear of obstruction.

-WARNING: Do not use mechanical devices or other means to accelerate the defrosting process, other than those recommended by the manufacturer.

-WARNING: Do not damage the refrigerant circuit.

-WARNING: Do not use electrical appliances inside the food storage compartments of the appliance, unless they are of the type recommended by the manufacturer.

-WARNING: This appliance can be used by children aged from 8 years and above and persons with reduced physical, sensory or mental capabilities or lack of experience and knowledge if they have been given supervision or instruction concerning use of the appliance in a safe way and understand the hazards involved.

-WARNING: Children shall not play with the appliance.

-WARNING: Cleaning and user maintenance shall not be made by children without supervision.

-WARNING: If the supply cord is damaged, it must be replaced by the manufacturer, its service agent or similarly qualified persons in order to avoid a hazard.

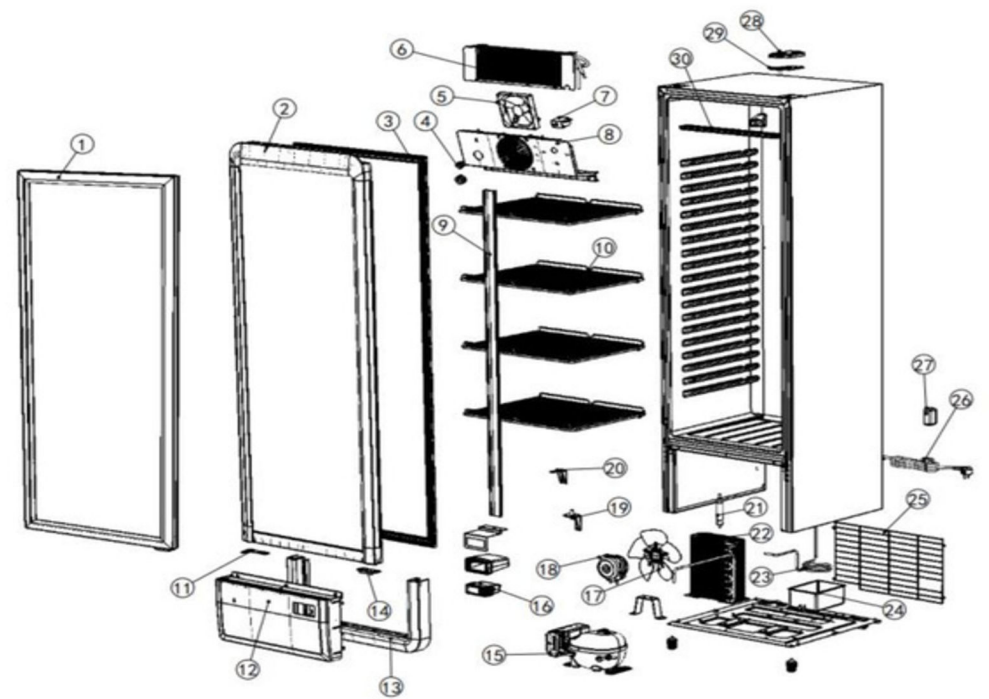
WARNING: LED light is not allowed to operate by oneself, but by professional maintenance personnel.

6

Pansiankatu 13,  
38700 Kankaanpää  
040 530 9041  
050 592 7618  
info@restarama.com

**SC-280\_Spare parts list**

No.	Part Code	Parts name	Standard / Option
1	2010500-15114	Glass door with right angle door	Standard
3	2030208-15009	Door gasket	Standard
4	2030311-15010	Light switch	Standard
5	2030302-15014	Evaporator fan motor	Standard
6	2030401-15006	Evaporator	Standard
7	2030303-15008	Mechanical controller	Standard
8	2030206-00022	Plastic fan panel	Standard
9	2030110-15007	Water pipe cover	Standard
10	2020200-15026	Shelf	Standard
12	2030204-00771	Plastic front grill	Standard
13	2030204-00770	Plastic front grill bezel	Standard
14	2030109-15063	Limit block	Standard
15	2030301-15011	Compressor	Standard
17	2030114-00361	Condensor fan motor blade	Standard
18	2030302-15007	Condensor fan motor	Standard
19	2030109-15061	Lower right door hinge	Standard
20	2030113-15029	Door holder	Standard
21	2030404-00012	Dryer filter	Standard
22	2030402-15006	Condensor	Standard
23	2030403-15019	Subcondenser	Standard
24	2030211-00001	Water tray	Standard
25	2020300-15010	Backnet	Standard
26	2030308-15009	Power cable	Standard
27	2030306-15005	LED driver	Standard
28	2030213-15030	Right upper hinge cover	Standard
29	2030109-15059	Right upper hinge	Standard
30	2030103-15055	LED light	Standard



**Remarks:**

Please consult our sales manager for updated information before a spare part order.