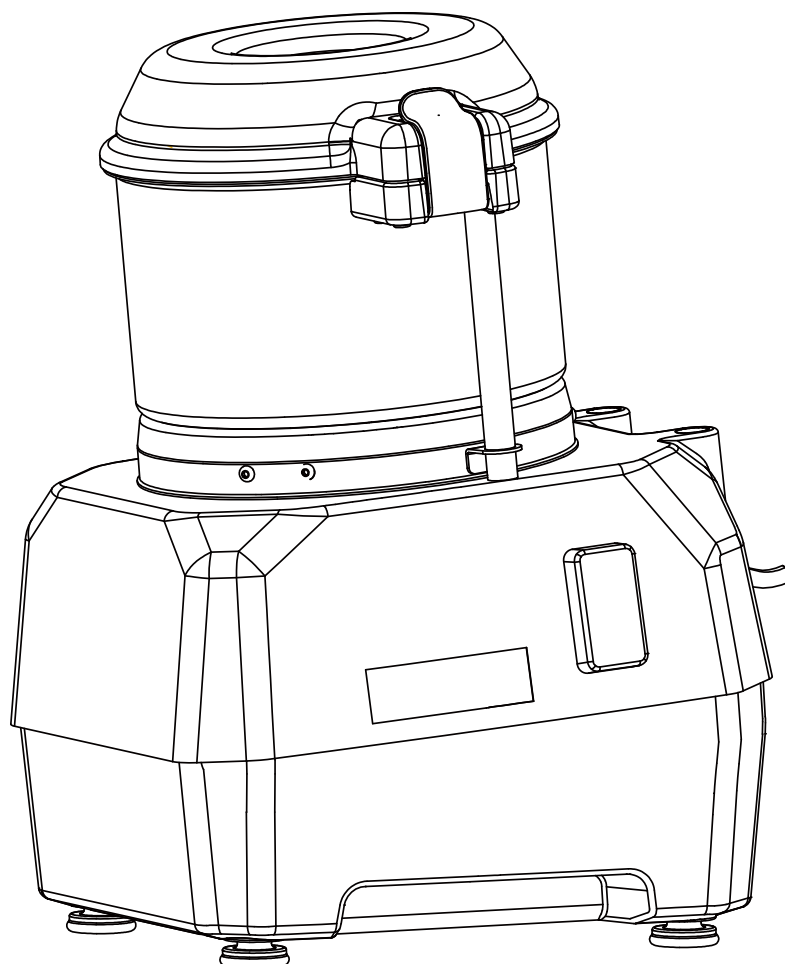


# INSTRUCTION MANUAL

## Original instructions for

# BOWL CUTTER

**FC3SP / FC5SP**



Keep these instructions with the appliance.  
You should read this user manual carefully before using the appliance.

**Dear Customer,**

**Thank you for purchasing this appliance. Please take a few minutes before starting operation of the appliance and read the following operating instructions.**

## **1. INTENDED USE**

- 1.1** This machine is designed for commercial use only and must not be used for household.
- 1.2** The appliance must only be used for the purpose for which it was intended and designed. Otherwise, it might lead to damage of the machine, property or personal injury.
- 1.3** The machine is intended for commercial and indoor use by trained and skilled personnel familiar with these instructions.

The machine body is mainly made in ABS for easy cleaning and maintenance. It has safety features compliant with the applicable safety Directives.

## **2 SAFETY REGULATIONS**

### **2.1 Safety regulations**

- 2.1.1** This appliance is intended for commercial use only and must not be used for household use.
- 2.1.2** The appliance must only be used for the purpose for which it was intended and designed. The manufacturer is not liable for any damage caused by incorrect operation and improper use.
- 2.1.3** Keep the appliance and electrical plug away from water and any other liquids. In the event that the appliance should fall into water, immediately remove plug from the socket and do not use until the appliance has been checked by a certified technician. Failure to follow these instructions could cause a risk to lives.
- 2.1.4** Never attempt to open the casing of the appliance yourself.
- 2.1.5** Do not insert any objects in the casing of the appliance.
- 1.1.6** Do not touch the plug with wet or damp hands.
- 2.1.7** Danger of electric shock! Do not attempt to repair the appliance yourself. In case of malfunctions, repairs are to be conducted by qualified personnel only.
- 2.1.8** Never use a damaged appliance! Disconnect the appliance from the electrical outlet and contact the retailer if it is damaged.
- 2.1.9** Do not immerse the electrical parts of the appliance in water or other liquids. Never hold the appliance under running water.
- 2.1.10** Regularly check the power plug and cord for any damage. If the power plug or power cord is damaged, it must be replaced by a service agent or similarly qualified persons in order to avoid danger or injury.
- 2.1.11** Make sure the cord does not come in contact with sharp or hot objects and keep it away from open fire. To pull the plug out of the socket, always pull on the plug and not on the cord.
- 2.1.12** Ensure that the cord (or extension cord) is positioned so that it will not cause a trip hazard.

**2.1.13** Always keep an eye on the appliance when in use.

**2.1.14 Warning!** As long as the plug is in the socket the appliance is connected to the power source.

**2.1.15** Turn off the appliance before pulling the plug out of the socket.

**2.1.16** Never carry the appliance by the cord.

**2.1.17** Do not use any extra devices that are not supplied along with the appliance.

**2.1.18** Only connect the appliance to an electrical outlet with the voltage and frequency mentioned on the appliance label.

**2.1.19** Connect the power plug to an easily accessible electrical outlet so that in case of emergency the appliance can be unplugged immediately. To completely switch off the appliance pull the power plug out of the electrical outlet.

**2.1.20** Always turn the appliance off before disconnecting the plug.

**2.1.21** Never use accessories other than those recommended by the manufacturer. Failure to do so could pose a safety risk to the user and could damage the appliance. Only use original parts and accessories.

**2.1.22** This appliance is not intended for use by persons (including children) with reduced physical, sensory or mental capabilities, or lack of experience and knowledge.

**2.1.23** This appliance must not be used by children under any circumstances.

**2.1.24** Keep the appliance and its cord out of reach of children.

**2.1.25** Always disconnect the appliance from the mains if it is left unattended or is not in use, and before assembly, disassembly or cleaning.

**2.1.26** Never leave the appliance unattended during use.

## **2.2 Special Safety Regulations**

**2.2.1** Use the appliance only as described in the manual.

**2.2.2** The appliance is intended for commercial and indoor use by trained and skilled personnel familiar with these instructions.

**2.2.3** This machine is designed for food cutting in restaurants, canteens and similar catering establishments.

**2.2.4** Any other use might lead to damage to the appliance or personal injury.

**2.2.5** This appliance should be operated by trained personnel in kitchen of the restaurant, canteens or bar staff, etc.

**2.2.6** Do not place the appliance on a heating object (gasoline, electric, charcoal cooker, etc.) Keep the appliance away from any hot surfaces and open flames. Always operate the appliance on a level, stable, clean, heat-resistant and dry surface.

**2.2.7 Danger of injury!** Care is needed when operating or cleaning. Wear protective gloves (not supplied) if necessary.

**2.2.8 Caution!** Securely route the power cord if necessary, in order to prevent unintentional tripping over and falling.

**2.2.9** Do not use the appliance before it is properly assembled.

**2.2.10** This appliance is not intended to be operated by means of an external timer or separate remote-control system.

**2.2.11** Never bypass any safety interlocks on the appliance.

**2.2.12 WARNING: ALWAYS** switch off the appliance and unplug from electrical power supply before cleaning, maintenance or storage.

**2.2.13 WARNING: ALWAYS** keep hands, long hair and clothing away from the moving parts.

**2.2.14 WARNING:** Take great care when handling the cutting blade. Wear protective gloves (not supplied) if necessary.

**2.2.15** Allow at least 15cm spacing around the appliance for ventilation purpose during use.

**2.2.16** Do not wash the appliance with water or waterjet. Washing with water can cause leakage and increase the risk of electric shock. No parts are dishwasher safe.

**2.2.17** Do not move the appliance while it is under operation. Unplug the appliance when moving and hold it at the bottom.

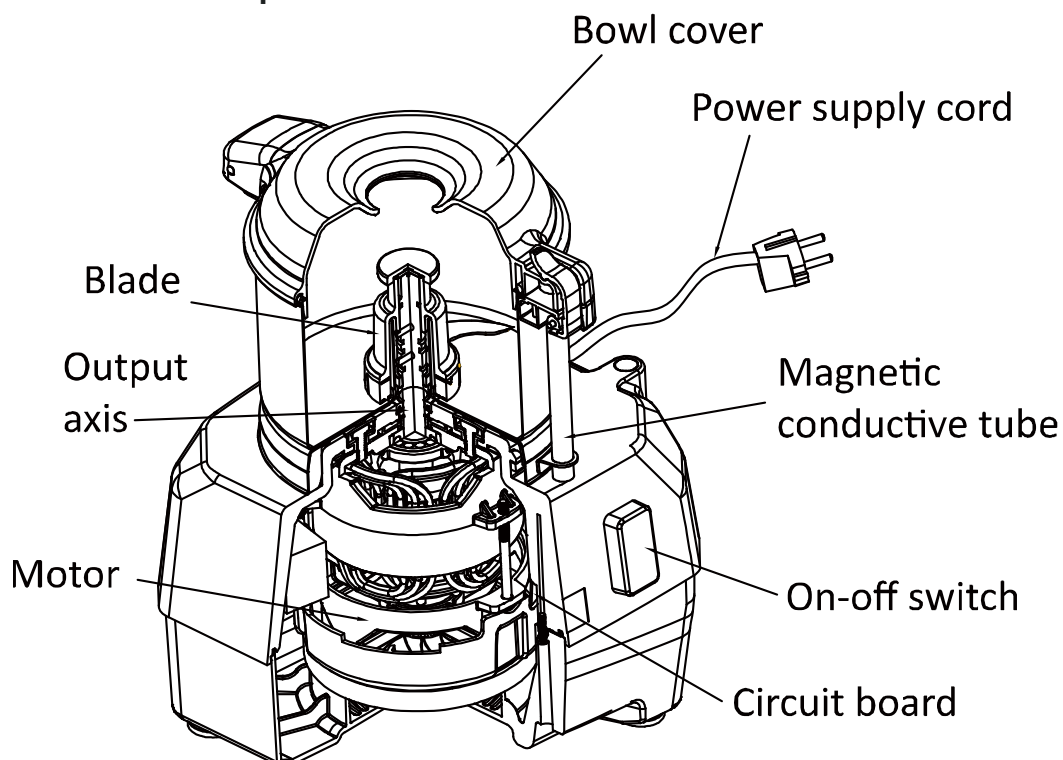
**2.2.18** Special care should be taken when moving or transporting the appliance due to heavy weight. With at least 2 people or using a trolley for assistance. Move the machine slowly, carefully and never be inclined over 45°.

### 2.3 Grounding installation

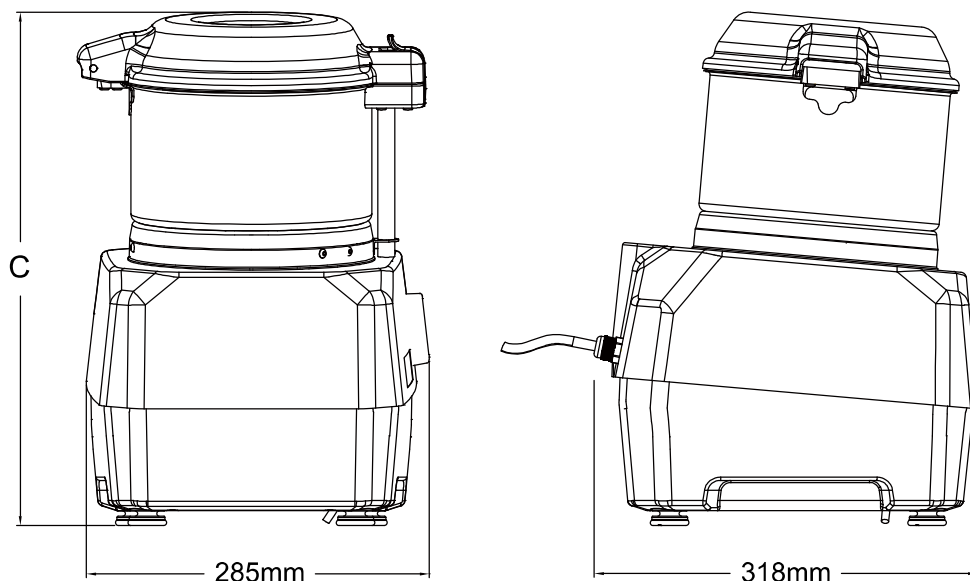
This appliance is classified as protection class I appliance and must be connected to a protective ground. Grounding reduces the risk of electric shock by providing an escape wire for the electric current. This appliance is equipped with a cord having a grounding wire with a grounding plug. The plug must be plugged into an outlet that is properly installed and grounded.

## 3 PRODUCT DESCRIPTION

### 3.1 Parts of description



### 3.2 MAIN TECHNICAL PARAMETERS



Mode	Height (C)	Capacity	Speed (rpm)	Voltage	Power	N.W./G.W.	Packing size
FC3SP	427mm	3L	1500(50Hz)	220V-240V ~ 50/60Hz	735W	14.3/15.8 kg	38x36x52 cm
FC5SP	470mm	5L	1800(60Hz)	110V ~ 60Hz		14.8/16.1 kg	

Remark: Technical specification is subjected to change without prior notification.

## 4 INTRODUCTION

### 4.1 Preparation for first use

- 4.1.1 Check to make sure the appliance is undamaged. In case of any damage, contact your supplier immediately and do NOT use the appliance.
- 4.1.2 Remove all the packing material and protection film (if applicable). Keep the packaging for future storage.
- 4.1.3 Clean the appliance, see: **4.6 Cleaning**.
- 4.1.4 Place the appliance on a level and steady surface, unless mentioned otherwise.
- 4.1.5 Make sure there is enough clearance around the appliance for ventilation purposes.
- 4.1.6 Position the appliance in such a way that the plug is accessible at all times.
- 4.1.7 Make sure the power outlet ratings correspond to the specifications printed on the rating plate.
- 4.1.8 Make sure that the machine is connected to a grounding system.
- 4.1.9 Even if safety systems are installed on the machine, prevent approaching moving parts with hands and do not touch the machine with wet or damp hands.
- 4.1.10 It is strongly recommended that the operator contact the after sales center if there is any problem or malfunction occurred. Please do not dismantle the machine or in place of unauthorized parts.

## 4.2 The manufacturer will be not responsible for following cases:

- 4.2.1 If the machine is tampered with or safety functions are installed by non-authorized staff.
- 4.2.2 If the components are replaced by unauthorized parts.
- 4.2.3 If the instruction in this manual is not carefully followed.
- 4.2.4 If the machine surfaces are treated with unsuitable substance or solvent.

## 4.3 Safety devices

**4.3.1 Micro-switch:** The appliance is equipped with two safety micro switches. These switches cut off the power supply, if during operation the handle is lifted up beyond a certain distance or the cover is opened. If the power is cut off after the handle was lifted, simply lower the handle again to restart the appliance.

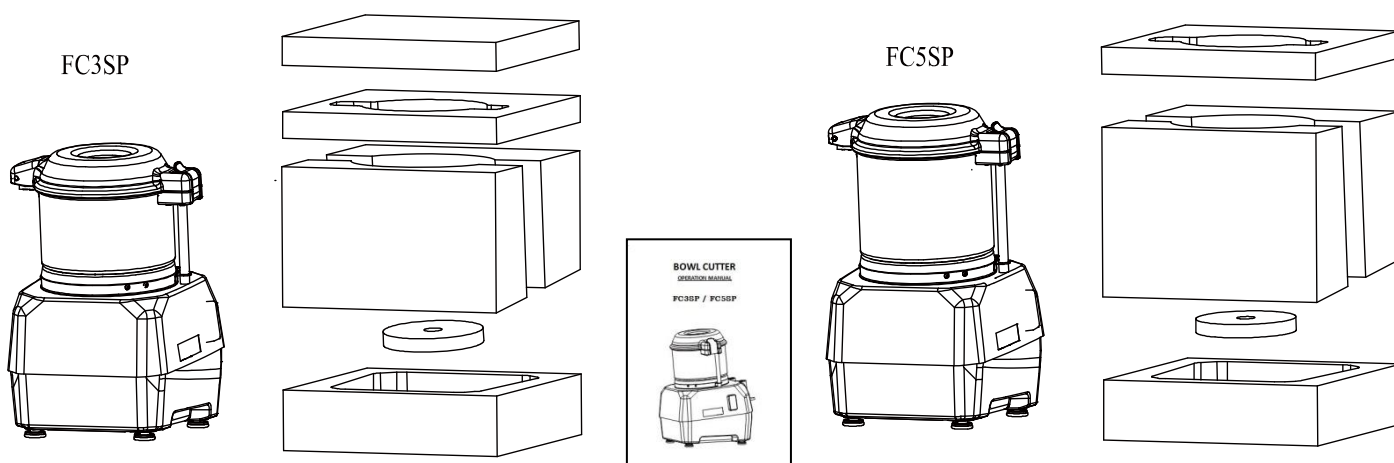
**4.3.2 Overcurrent protection switch (Circuit breaker):** The switch is designed to protect the electrical circuit from damage caused by excess current as a result of an overload or short circuit. The switch interrupts current flow after a fault is detected.

**Note:** To reset the machine, wait a few minutes till the motor cool down, then restart the machine.

## 4.4 INSTALLATION

### 4.4.1 Packing and unpacking

- 4.4.1.1 Remove all packaging materials. Keep the packaging for future storage.
- 4.4.1.2 After unpacking all accessories, lay them on a flat and stable surface.
- 4.4.1.3 Make sure the delivery contents are complete and free of any damage. If you find that parts are missing or show damage, do not use the appliance but contact your dealer.



**4.4.1.4** Clean the container, cover, blade and other parts which contact with food.

**BE CAREFUL:** the blade is very sharp. (Use gloves if necessary, not included)

**4.4.1.5** Position the appliance in such a way that the plug is always accessible.

### 4.4.2 Installation area

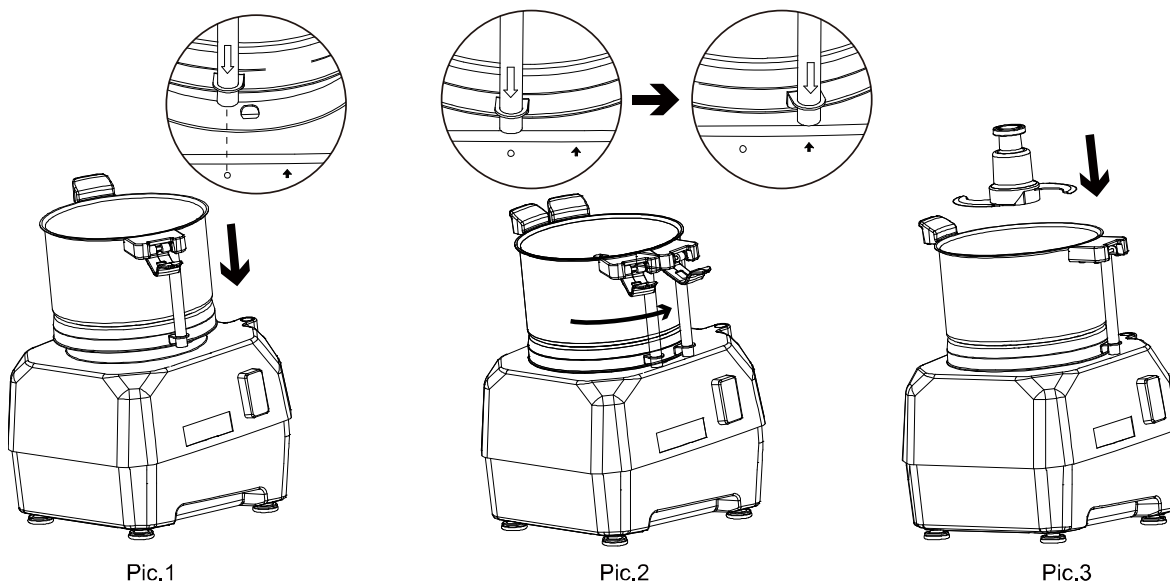
The selected machine work setting must be sufficiently lit and have an electric power outlet. The workplace must be sufficiently large, perfectly level and dry. The machine should be installed in

non-explosive environments. In any case, installation should be carried out by taking into account any applicable industrial safety regulations in force.

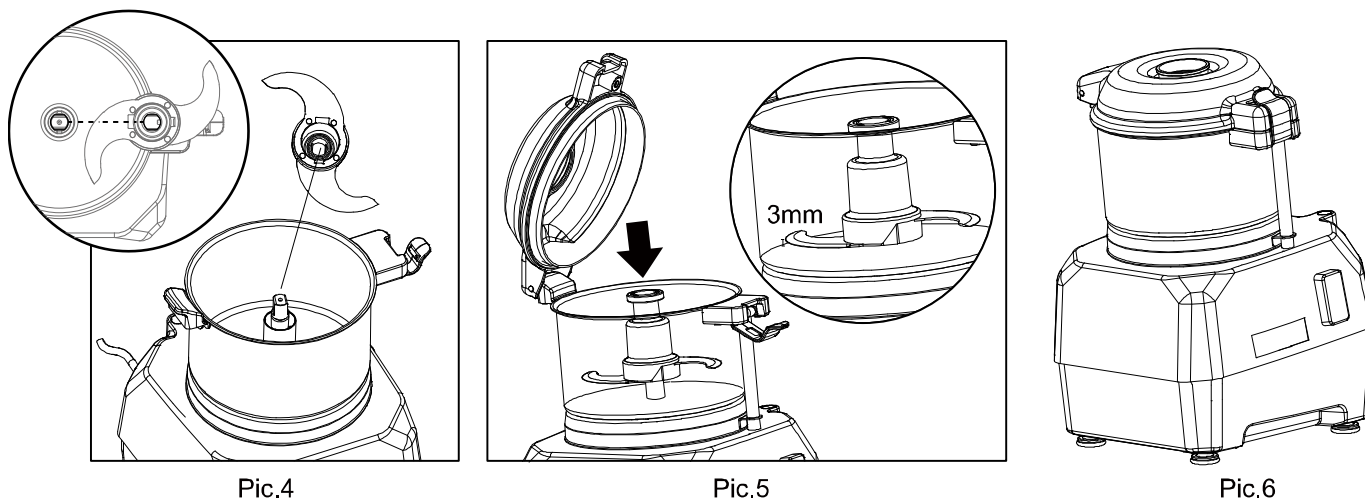
#### 4.4.3 Assembling instructions

**Attention:** Always unplug the appliance from the electrical power outlet before starting assembling or disassembling.

**4.4.3.1** Place the cutting bowl directly above the base, and the magnetic bar is aligned with the “•” position (Fig. 1). And then rotate the cutting bowl counter clockwise to align the magnetic bar to the “↑” position. (Fig. 2)



**4.4.3.2** Press the slider block to the bottom and lock the fastener.



#### 4.4.3.7 Safety micro switch

- The appliance is equipped with two safety micro switches. These switches cut off the power supply if, during operation, the handle is lifted up beyond a certain distance or the cover is opened.
- The machine will not be started if the cover closed only but the bowl is not in correct position. Before you start with the machine, you should make sure that the shaft is rotating in anticlockwise direction. Otherwise, the bowl cutter will not cut food.

#### 4.4.3.8 Checking the direction of rotation

Before you start with the operation, you should make sure that the shaft is rotating in an anticlockwise direction. Otherwise, the blades will not run.

#### 4.4.4 Electric connection

**DANGER-CAUTION:** Electric connection to the power outlet should be operated by skilled personnel. Check for the perfect efficiency of the plant grounding system. Make sure that the line voltage (V) and frequency (Hz) correspond to the machine ratings (refer to the machine identification plate and wiring diagram). The machine comes equipped with an electric cable with plug. Plug the machine into a main wall switch with differential.

### 4.5 OPERATING

4.5.1 Connect the power plug to a socket outlet.

4.5.2 Open the bowl cover

4.5.3 Lift the cover and feed the food into the bowl, close cover. Or feed the food from the hole of bowl cover.

4.5.4 Press the ON button. The operating light in the ON button will light up and the appliance will start working.

4.5.5 **Warning!** NEVER put food over 2/3 of bowl. Recommended minimal volume is NOT lower than the blade level. Lacking food leads to vibration. If food is too big, cut it for suitable size before feeding.

4.5.6 The appliance is not allowed no-load running over than 30mins.

4.5.7 When you are finished, press the OFF button, unplug the appliance and clean it.

### 4.6 Cleaning

4.6.1 It is important to keep the appliance clean and in good working condition to ensure optimum quality of the products and long life of the appliance.

4.6.2 Never immerse the appliance in water or other liquids.

4.6.3 To clean the motor housing, unplug the appliance and clean with a damp cloth or sponge with some mild soap solution. Dry with a dry cloth.

4.6.4 Never use abrasive sponges or detergents, steel wool or metal utensils to clean the interior or exterior parts of the appliance.

**WARNING:** Take care during cleaning when handling the rollers due to its sharp edges. Wear protective gloves (not supplied) if necessary.

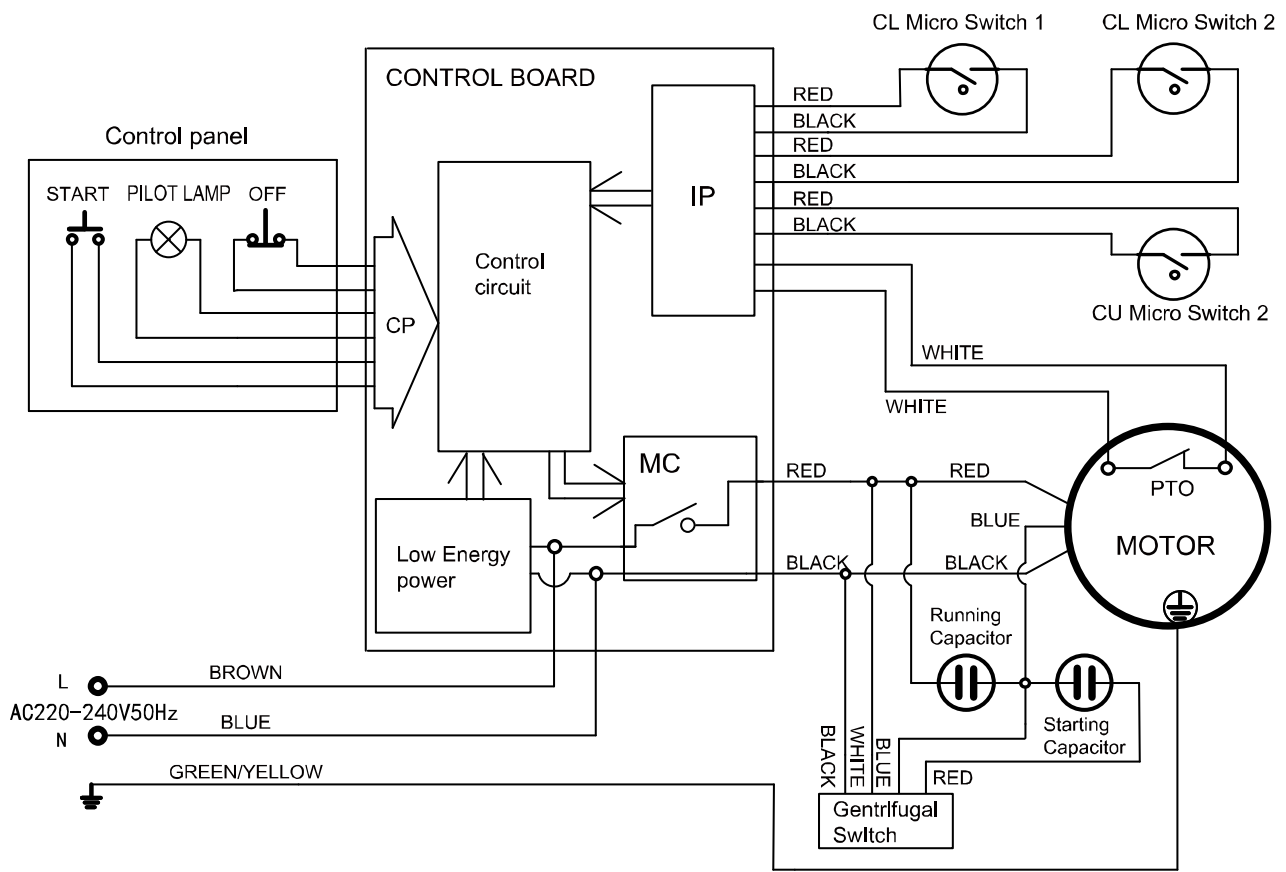
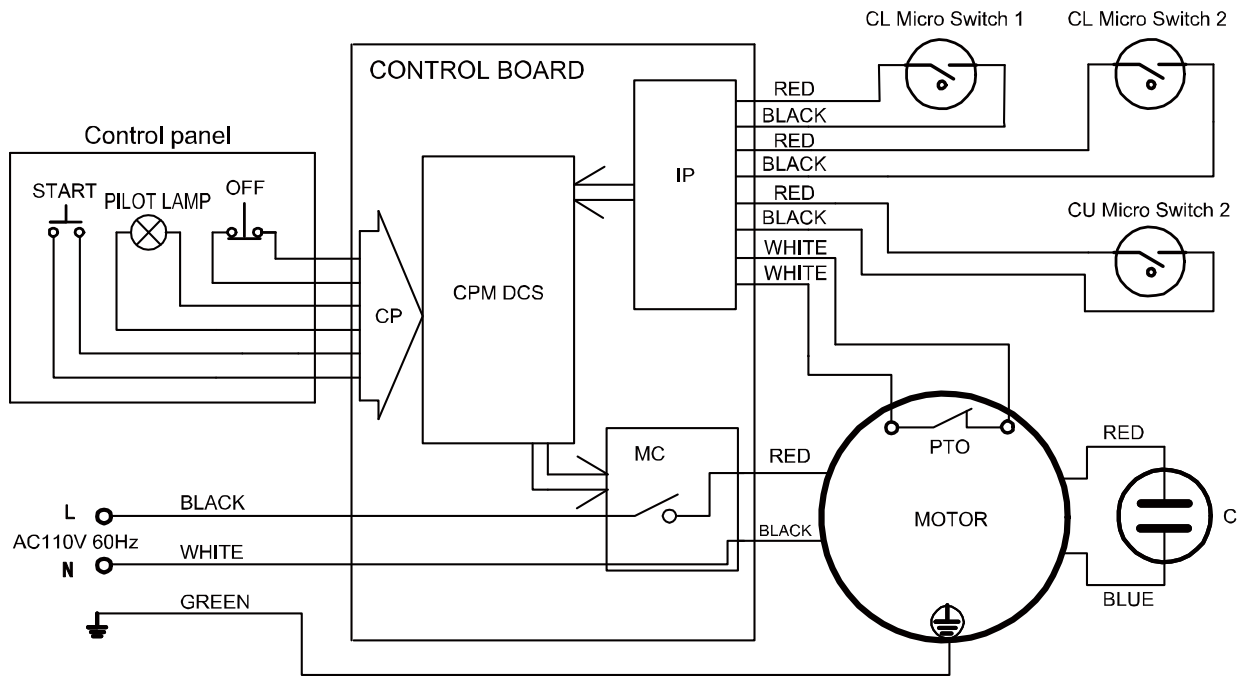
### 4.7 Storage

4.7.1 Before reassembling, make sure that all parts are dry. Before storing, remove all residues from the appliance (incl. the basins), disconnect it from the supply and clean the appliance and its accessories thoroughly. Use white Vaseline oil (or any similar product) to protect all parts of the device.

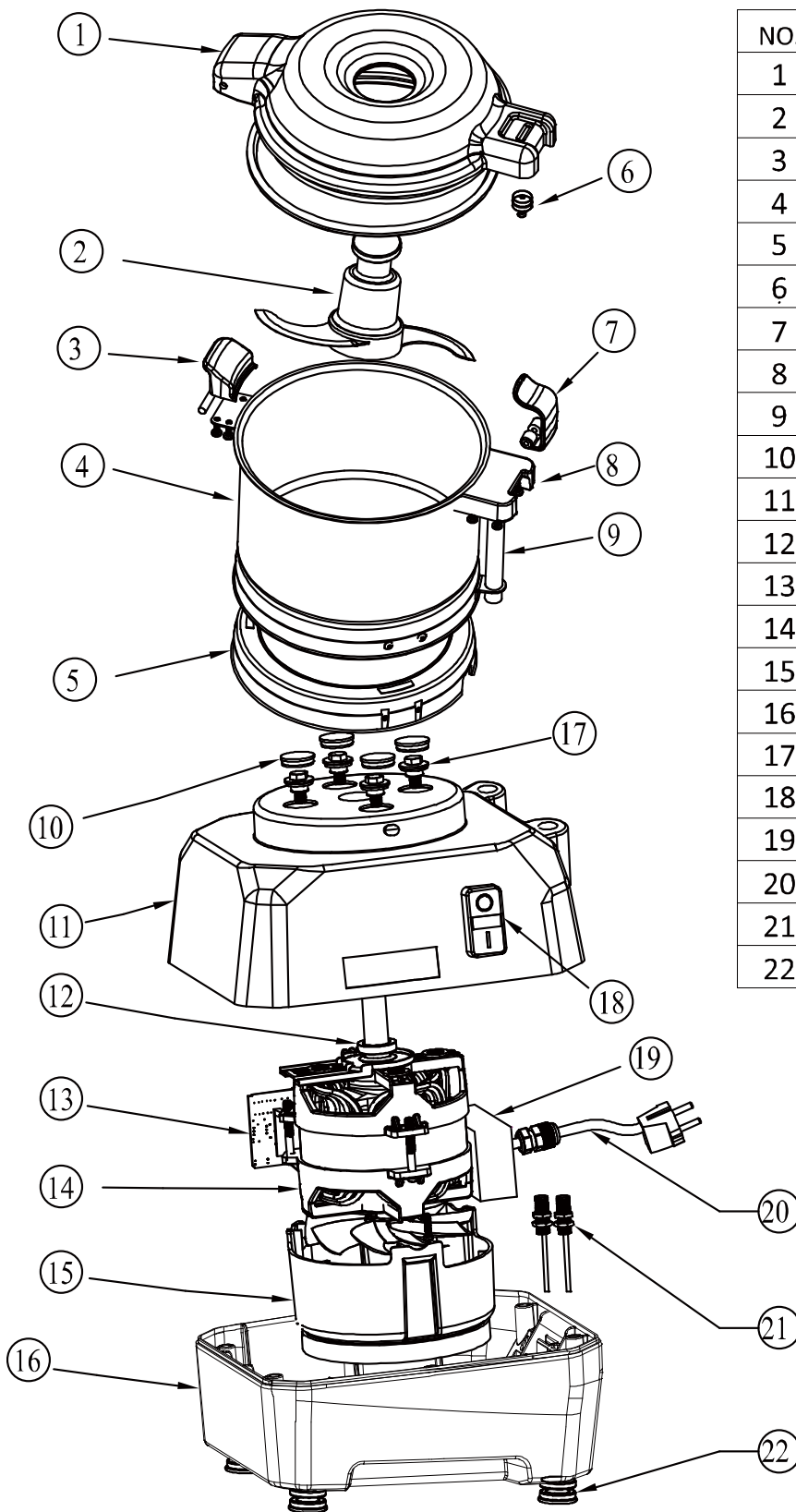
4.7.2 To protect the appliance from dust, cover it with a cloth that allows air circulation inside the appliance.



# 5 CIRCUIT DIAGRAM



## 6 EXPLODED VIEW AND PARTS LIST



NO.	NAME
1	Bowl cover
2	Blade
3	Left handle
4	Bowl
5	Bottom lock ring
6	Magnet
7	Fastener
8	Right handle
9	Magnetic conductive tube
10	Bolt cover
11	Motor upper cover
12	Oil seal
13	Circuit board
14	Motor
15	Ventilation baffle
16	Bottom base
17	Bolt
18	On-off switch,
19	Electronic centrifugal switch
20	Power supply cord
21	Micro switch
22	Rubber feet